



huontrail

DISCOVER THE SOUTH

Touring Guide and Map

2016



Be inspired...

huontrail.org.au

Scan here to download our app!



Essentially Tas

... handpicked selection of unique self-contained accommodation throughout the beautiful Huon Valley and Far South



DRIFTWOOD COTTAGES

Waterfront Cottages
all with stunning bay views... choose from studio, 2 bedroom or spa options!



RAMINEA ROSES

Old world charm combined with modern convenience, peaceful garden setting and cosy wood fire.



THE SHACKEAU

Sublime water's edge cottage accommodation, beautiful outlook over Southport Bay.



THE PENINSULA EXPERIENCE

Exclusively yours... hot tub under the stars, luxurious living, walking trails, wildlife and water...



HAWKERS GREEN COTTAGE

Oozing romance....
Exquisite new waterfront cottage, throw in a line or relax by your wood fire!



THE JETTY HOUSE

Timeless beauty,
historical seaside home,
comfortable affordable accommodation.

Booking enquiries and full accommodation range
www.essentiallytas.com ph 1800 353 983

Contents

ABOUT THE HUON TRAIL REGIONS	4
D'ENTRECASTEAUX CHANNEL	5
BRUNY ISLAND	15
HUON VALLEY	23
FAR SOUTH	39
PARKS AND RESERVES	12
TOWN SERVICES	13
BOATING ON THE HUON TRAIL	14
HUON TRAIL PRODUCERS	19
COMMUNITY MARKETS	20
CALENDAR OF EVENTS	21
WINE AND CIDER TRAILS	22
HUON TRAIL MAP	24
HISTORY AND HERITAGE	37
GEEVESTON CUIRCUT AND PLATYPUS WALK	37
CYCLING ON THE HUON TRAIL	38
WATERWAYS AND WILDERNESS	44
WALKING TRACKS	45
TASMANIAN VISITOR INFORMATION NETWORK	48

Left: Southport

Front cover (Main): Cape Bruny Lighthouse

Front Cover (Inset): South Cape Bay walk, Conningham Beach picnic, Festival performer, grazing sheep

Back Cover (Background): Wine barrels

This brochure is a production of the Huon Valley and Kingborough Councils. **Edition 17:** Printed October 2015.

Photographic acknowledgements: Dan Fellows, Heath Holden, Brendan Williams, Justin Hyde, Steve Pearce, Kate Berry, Craig Parsey, Andrew Wilson, Paul Fleming, Rob Burnett, Wheeler Studios, Nick Osborne, Joe Shemesh, Andrew McIntosh (Ocean Photography), Marc Bester Photography, Mike Peters, Ceri Brose, Alice Hanson, Wolfgang Glowacki, Tourism Tasmania, Far South Photography and Huon Valley Council.

Base map supplied by TASMAP.

Production: Artemis Publishing Consultants

Text: Chris Viney – Pavlov's Dog Writing and Editing Services.

Disclaimer: The Huon Valley Council (ABN 77 602 207 026) have made every endeavour to ensure that details are correct at the time of printing of this brochure (October 2015) and can accept no responsibility for any inaccuracy or mis-description contained in this brochure as a result of information supplied, and can accept no responsibility for subsequent change or withdrawal of prices, details or services shown.

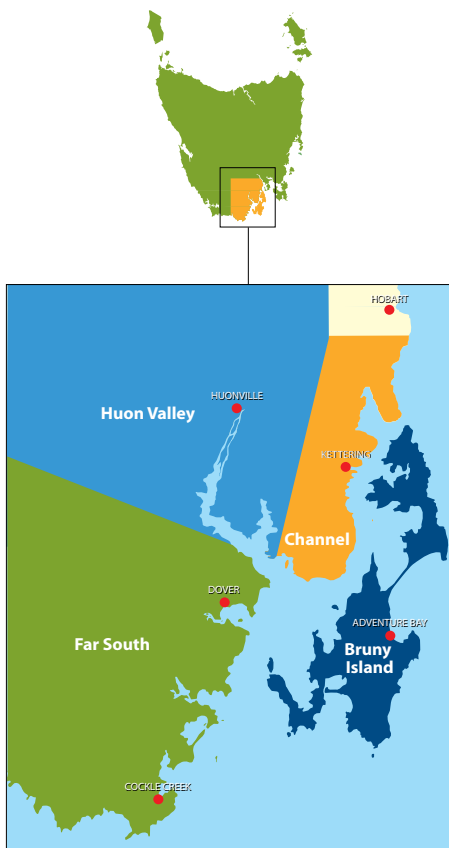
About the Huon Trail

The Huon Trail in Tasmania's south is made up of 4 regions: **D'ENTRECASTEAUX CHANNEL**, **BRUNY ISLAND**, **HUON VALLEY** and **FAR SOUTH**. Likewise, this guide is conveniently divided into 4 colour coded chapters - each chapter corresponding with its own region. The centrefold (page 24) is a complete Huon Trail pull-out touring map.

The Huon Trail touring route begins 20 minutes south of Hobart. It leads you to ideal places for a relaxing holiday or short break. Take the time to create your own personal adventure of wild coastlines and sheltered waterways, quiet country roads through farmlands and forests to World Heritage wilderness. There are outdoor adventures and walks, a rich and complex maritime history and rural heritage, delicious food and wine, health and wellness retreats, landscaped gardens and friendly artists and craftspeople.

Relax and spend a few days with us on the Huon Trail!

You can also download or view this guide online at www.huontrail.org.au



The Tourism Industry Council of Tasmania is committed to help driving improvement and professionalism in the Tasmanian tourism industry.

Businesses displaying this logo have completed an accreditation program which ensures that they meet and adhere to a high standard and signals to its customers and the wider industry that they are committed to providing high quality products, services and experiences. For more information visit: www.tict.com.au



This symbol indicates that a business has gained Rainbow Tasmania Tourism Accreditation. It means the tourism business and their staff are committed to treating everyone in the same professional non-discriminatory manner and can provide a safe and comfortable environment for gay and lesbian clients. It also means that your hosts and their staff have a detailed knowledge of gay and lesbian venues as well as support services in their area.

To learn more or the search for Rainbow Accredited businesses on the Huon Trail, visit <http://www.rainbowtas.org/pinktourism/pinktourism.html>

D'Entrecasteaux Channel

The first ship to carve the waters of the Channel was commanded by French navigator Bruni D'Entrecasteaux – now, the waterway and the island it creates both bear his name. Like D'Entrecasteaux, modern mariners treasure the hidden bays and sheltered coves of the Channel.

Along the road that winds its way south through the waterside hamlets of Margate and Snug, Kettering and Woodbridge, Middleton and Gordon, you'll glimpse white sails and bright spinnakers, hard-working fishing boats, the busy runabouts of salmon farmers, visitors relaxing in sea kayaks and kids jigging for squid from a jetty – that's the life of the Channel today.



Grandveve Sheep Cheesery

Sloping back up into the hills, orchards and pastures meet the dark forest, blazing with golden wattle bloom in spring. Take the low road along the coast all the way to Cygnet, hub of a creative community at the head of a quiet bay.

Or take the high road, climbing to the crest of the hills with wide views over the Huon estuary and the ragged summits of the distant World Heritage Wilderness Area. Either way it's a route offering beaches and blueberries, wood turners and wattlebirds, clay pots and cray boats, world-class restaurants, wineries, cafés and tea rooms.



Villa Howden High Tea

D'Entrecasteaux Channel

ATTRACTIONS



Woodbridge Hill Handweaving Studio

Watch a weaver at work

1

A textile experience with colour and textures in a beautiful location with spectacular views. Handwoven wraps and scarves, cushions and rugs, knitwear and wall tapestries, all made here from natural fibres such as hand spun alpaca, wool and silk.

Open most mornings 9:30am – 1pm. Closed Saturdays

269 Woodbridge Hill Road,

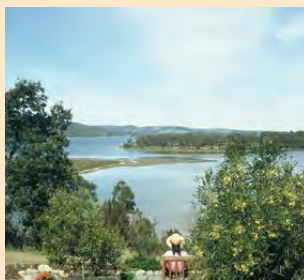
Woodbridge

P (03) 6267 4430

Map Ref I6

woodbridge.weaving@yahoo.com.au

web.clearnetworks.com.au/~handweaving



Inverawe Native Gardens

Tasmania's largest landscaped native garden



2

Be inspired! Thousands of colourful native plants, stunning views and interpretive signs add to the experience. Take tea on the terrace and be entertained by the extraordinary variety of birds that call Inverawe home. Open daily, September to May 9am. Last entry 5pm. Guided tours also available.

Behind the Margate Train

1565 Channel Highway, Margate

P (03) 6267 2020

Map Ref I3

www.inverawe.com.au

gardens@inverawe.com.au



Judged Australia's Top
6 of 6000 Fine Food Producers

Map Ref I6



59 Devlyns Road, Birchs Bay

P (03) 6267 4099 F (03) 6267 4779

info@grandvee.com.au

www.grandvee.com.au



Grandvee Sheep Cheesery & Distillery

3

Enjoy up to 8 different cheeses at Australia's only organic sheep cheesery. Children welcome to pat and feed our lambs (seasonal) and watch a sheep-milking demonstration (3pm Oct–Mar). Lunch at our café and enjoy sheep milk coffee, liqueur and ice cream (seasonal) with spectacular views of the D'Entrecasteaux Channel. Also available is the world's first sheep whey vodka and gin produced in our newly built distillery. Open all year from 10am–5pm, except Jun, Jul, Aug 10am–4pm. Visit our Hobart tasting shop inside the Brooke St Pier, open daily.

D'Entrecasteaux Channel

ATTRACTIONS

Hartzview Vineyard Heritage Pickers Hut Village

70 Dillons Road, Gardners Bay P (03) 6295 1623 F (03) 6295 1723
www.hartzview.com.au robpatterson@hartzview.com.au



4

Step back in time and discover the way families lived when picking 'small fruits' in the 1900s. Enjoy a self-guided tour of a collection of seven different style pickers' huts (gold coin donation). Learn about the Italian prisoners of war who lived on the property. Tastings of wines, fruit ports, liqueurs and mead. Light all day lunches. Open 10am – 5pm. (see Wineries and Dining page 10)

Map Ref H6

The Shot Tower

Channel Highway, Taroona (B68) P (03) 6227 8885 shottowerhobart@hotmail.com

5

The only circular sandstone shot tower remaining in the world! Tea rooms, gifts, gardens and beautiful views. Map Ref J2

ACCOMMODATION



Luxury Boutique Accommodation
Map Ref I3



77 Howden Road, Howden
P (03) 6267 1161
stay@villahowden.com.au
www.villahowden.com.au



Villa Howden ★★★★★ Self Rated

6

This elegant French chateau has been magically created 15 minutes South of Hobart, overlooking North West Bay. Set on 4 ½ acres of landscaped gardens, Villa Howden offers 10 unique luxury suites featuring a timeless provincial décor with modern touches, and equipped with every comfort. The hotel features the award-winning Bruni's Restaurant and bar, indoor swimming pool, library and piano lounge. *Bonus: Stay 4 nights, pay for 3 nights (blockout dates & conditions apply). Complimentary glass of sparkling wine on arrival. Free WiFi and parking.*

Three Hut Point Accommodation ★★☆☆

4767 Channel Highway, Gordon P (03) 6292 1630/0488 162 150

B&B or self-contained waterfront accommodation. Sleeps 8. Visit www.threehutpoint.com.au



7

Map Ref I7

Channel Views Relax and Revive

24 Rays Court, Kingston M 0410 459 350 P (03) 6227 2880 channelviews@bigpond.com channelviews.com.au

Spacious semi-rural apartment very close to Bruny Island, Hobart, Kettering and the Huon Valley. Map Ref I3



8

D'Entrecasteaux Channel

ACCOMMODATION



Motel, restaurant, café and bar

Map Ref 12



19 Kingston View Drive, Kingston
P (03) 6227 2315 F (03) 6227 2316
info@southernlightshotel.com.au
www.southernlightshotel.com.au



Southern Lights Hotel ★★☆☆ *Self Rated*

9

Situated only 10 minutes from Hobart GPO, at the gateway to the Huon Trail and adjacent to the Kingborough Sports Centre. Southern Lights Hotel boasts fantastic views of Mt Wellington and the Derwent River, the very popular Aura Cafe with a focus on Tasmanian Produce, a heated and sheltered beer garden and lounge bar, 2 private function rooms and 20 spacious quality Motel rooms sleeping 1-4 guests each. The property has ample free parking, spacious gardens/lawns and offers free internet.



Cabins, caravans, camping

Map Ref 14



35 Beach Road, Snug
P (03) 6267 9138
stay@snugpark.com.au
www.snugpark.com.au



Snug Beach Cabin & Caravan Park ★★☆☆

10

Beachfront holiday accommodation 30 mins drive south of Hobart, overlooking North West Bay. Our one- and two-bedroom Ensuite cabins accommodate up to seven guests with well-equipped kitchens and comfortable lounge area. Some of the level, grassed camping sites have beach frontage. Some of the powered sites are drive-through. There is a well-equipped amenities block, coin operated laundry, a camp kitchen and free WiFi.

D'Entrecasteaux Channel

ACCOMMODATION



Boutique accommodation in a vineyard setting

Map Ref I5

100 Saddle Road, Kettering
P (03) 6267 4339
info@heronsrise.com.au
www.héronsrise.com.au



Herons Rise Vineyard

11

Self-contained, boutique cottages with glorious sea views, individually designed for your comfort in a peaceful vineyard setting in Kettering. Enjoy cosy warmth in front of log-fires, while savouring our wine. Prepare your own dinner, using fresh ingredients locally sourced by us. Wake to birdsong, freshly baked bread and real coffee after a blissful night's sleep. Spend your days exploring Bruny Island, nearby marinas and local arts and crafts along the beautiful Huon Trail. Kettering - gateway to Bruny Island; 30 mins from Hobart.



Hartzview Vineyard Homestead

Your exclusive retreat – Spa bath



12

A peaceful, secluded, self-contained warm cottage with stunning views. An ideal base for touring Bruny Island, the Huon Valley and Hobart for up to six people. Bush walks with spectacular views. Tastings at Wine Centre. Unwind in a hot spa bath after the day's adventures. Enjoy a glass of Estate Pinot Noir with a vineyard and cheese platter in front of the log fire. Breakfast provisions included. (see Wineries and Dining page 10) **Map Ref H6**

70 Dillons Road, Gardners Bay
P (03) 6295 1623 F (03) 6295 1723
www.hartzview.com.au
robpaterson@hartzview.com.au



Kettering

D'Entrecasteaux Channel

WINERIES AND DINING



*Restaurant, bar, dining
and cruise*

Map Ref 15



3435 Channel Highway, Woodbridge
P (03) 6267 4088 F (03) 6267 4066
functions@peppermintbay.com.au
www.peppermintbay.com.au



Peppermint Bay

13

Peppermint Bay is nestled on four acres of waterfront headland in the village of Woodbridge with commanding views across the d'Entrecasteaux Channel and north to Mt. Wellington.

Open 7 days a week for bistro dining, featuring local and regional produce, light meals, coffee, tea and freshly baked fare. Dinner served Thursday to Saturday. No bookings necessary.

Alternatively, choose to take it all in aboard the Peppermint Bay lunch cruise departing daily from Brooke Street Pier. Bookings essential.



*Café, Cellar Door tastings, providore
and much more*

Map Ref H6



70 Dillons Road, Gardners Bay
P (03) 6295 1623 F (03) 6295 1723
robpaterson@hartzview.com.au
www.hartzview.com.au



Hartzview Wine Centre

14

All day lunches served in café with magnificent views. Tastings from hand-picked Pinot Noir, Sauvignon Blanc, Chardonnay and a large range of preservative free fruit ports, liqueurs, Tasmanian cassis and mead.

Linger and enjoy a combined vineyard and cheese platter, Devonshire tea, specialty desserts and real coffee. Take a stroll into history on the self-guided heritage pickers hut walk (see Attractions page 7). Self-contained spa bath accommodation available (see Accommodation page 9). Open 10am – 5pm every day all year (except Christmas Day).

D'Entrecasteaux Channel

WINERIES AND DINING



Waterfront Cafe and Gift Shop
Map Ref 15



79 Ferry Road, Kettering (off B68)
P (03) 6267 4494 F (03) 6267 4266
kettering.info@gmail.com
www.mermaidcafe.com.au



Mermaid Café and the Bruny Centre

15

Right on the waterfront at the Bruny Island ferry terminal 30 kms south of Hobart with spectacular views over the Marina and the glassy waters of Little Oyster Cove. We use only the freshest local ingredients, hand make all our delicious cakes and have a large takeaway selection. Our knowledgeable and friendly staff in our Visitor Centre can book your accommodation, cruises and tours whilst you browse unique local products and art in our gift shop. Open 7 days from 8.30am.



Pepperberries Garden Café & Art Farm

16

Boutique café, farm and forest walks

Pepperberries Garden Café in Birchs Bay just 45 minutes from Hobart. Stunning views of *Five Bob Farm* and Mt Wellington. Delicious meals from the kitchen garden. Open Thursday – Sunday 10am – 4pm and selected public holidays. Sculpture Trail (Easter – July) and forest walks (all year), dogs on lead welcome.

Map Ref 16

3866 Channel Highway, Birchs Bay

P (03) 6267 4078

pepperberriesgardencafe@outlook.com

Nandroya Vineyard and Cellar Door *Linking the Huon with Channel*



17

262 Sandfly Road, Margate P (03) 6267 2377 M 0419 348 867 E sales@nandroya.com.au

Limited to Sauvignon Blanc & Pinot Noir Wines. A small vineyard with quality wines. **Map Ref 13**



Sunrise over Kingston Beach

Parks and Reserves

Huonville

BBQ (free electric), disabled access public toilets, dogs on-leash exercise, fishing, river, ducks, lawn/grassed area, picnic tables, play area fenced, RV dump point, seating, shelter, wheelchair accessible areas and double boat ramp

Ranelagh

BBQ (free electric), shelter, play area (fenced), picnic tables, lawn/grassed area and small bike track

Judbury

BBQ (free electric), shelter, play area, lawn/grassed area, disabled access, toilets, picnic tables, walking track along river and kayak platform

Franklin Foreshore

BBQ (free electric), boat ramp, RV site, disabled access public toilets, off leash dog exercise, fishing, river, lawn/grassed area, Franklin Oval, picnic tables, play area, RV dump point, seating, shelter, toilets, walking track and wheelchair accessible areas

Port Huon - Shipwrights Point Recreation Area

BBQ (free electric), boat ramp and jetty, RV site, RV dump point, fishing, play area (fenced) with small bike track and inclusive orbit, off leash dog exercise, river, lawn/grassed area, picnic tables, shelter, seating, public toilets and wheelchair accessible areas

Geeveston - Heritage Park

BBQ (free electric), disabled access toilets, dogs on-leash exercise, river/creek, lawn/grassed area, picnic tables, platypus walkway, seating, toilets, wheelchair accessible areas, small skate park, playground and educational bike track

Dover Foreshore

BBQ (free electric), boat ramp, fishing, play area, dog exercise, river, beach, picnic tables, toilets and exercise station.

Cygnets - Burtons Reserve

BBQ (free electric), disabled access toilets, exercise station, lawn/grassed area, picnic tables, play area, seating, shelter, toilets, walking track and wheelchair accessible areas

Blackmans Bay – Foreshore

BBQ (free electric), play area, disability access toilets, beach, fishing

Bruny Island - Dennes Point Foreshore

BBQ (free electric), toilets, boat ramp, jetty

Bruny Island - Adventure Bay

BBQ (free electric), toilets, boat ramp, jetty

Kettering - Trial Bay Foreshore

BBQ (free electric), play area, river, fishing

Kingston - Christopher Johnson Memorial Park (Next to Browns River)

BBQ (free electric), play area, toilets, river, ducks, lawn/grassed area

Margate - Dru Point Reserve

BBQ (free electric), play ground, disability access to most areas of play area including disability access swing (key available from Kingborough Council Office, Kingston), children's bike track, boat ramp, jetty, fishing, dog exercise area, disabled access toilets, wheelchair accessible areas, lawn/grassed area, walking track

Taroona Beach, Taroona Crescent

BBQ (free electric), play area, toilets, boat ramp, beach

Tinderbox Foreshore Reserve - Fergusson Avenue, Tinderbox

BBQ (free electric), play area, toilets, boat ramp, jetty, river, fishing

Woodbridge - Silverwater Park, Channel Highway

BBQ (free electric), play area, toilets, boat ramp, jetty, river, fishing

Gordon

Disabled access toilet, picnic tables, RV dump point, lawn/grassed area, fishing, boat ramp (nearby)

Coningham Beach and Reserve

Toilets, disabled access toilet, fishing, beach, picnic tables, seating, BBQ (free electric), walking tracks

Town Services

Police, Ambulance and Fire Emergency dial: 000

Bruny Island	Alonnah: online access, post office, general store Adventure Bay: petrol, ATM, general store
Cygnnet	pharmacy, bank, petrol, vehicle servicing/repairs, online access, post office, doctor, supermarket, real estate agent, library, ATM, laundromat
Dover	pharmacy, bank, petrol, vehicle servicing/repairs, online access, post office, doctor, ATM, supermarket, laundromat, real estate agent
Franklin	vehicle servicing/repairs, post office, ATM, general store
Geeveston	pharmacy, bank, petrol, vehicle servicing/repairs, online access, post office, doctor, ATM, supermarket, laundromat, real estate agent, library
Huonville	pharmacy, bank, petrol, LPG, vehicle servicing/repairs, online access, post office, doctor, optometrist, dentist, physiotherapist, naturopath, ATM, major chain supermarket, laundromat, lawyers and property surveyors, real estate agent, library
Kettering	petrol, post office
Kingston	pharmacy, bank, petrol, LPG, vehicle servicing/repairs, online access, post office, doctor, optometrist, dentist, physiotherapist, naturopath, x-ray, ultrasound, ATM, major chain supermarket, laundromat, lawyers and property surveyors, real estate agent, library
Margate	pharmacy, petrol, LPG, vehicle servicing/repairs, online access, post office, ATM, real estate agent, general store
Snug	petrol, post office, doctor, general store
Southport	petrol, post office
Woodbridge	petrol, vehicle servicing/repairs, post office, online access

RV Dumping Sites and Potable Water

Huonville

Dump Point: Esplanade Huonville (no camping). Camping available at Huon Valley Caravan Park.

Potable Water: Huonville Foreshore picnic area

Franklin (RV Friendly Town)

Dump Point and Potable Water: RV site at Franklin Foreshore Reserve (next to Petty Sessions Restaurant)

Port Huon (RV Friendly Town)

Dump Point and Potable Water: Shipwright's Point RV site

Geeveston

Dump Point: Arve Road, near entrance to Heritage Park

Cygnnet

Dump Point: Burton's Reserve (no camping), Channel Highway, Cygnnet. Camping available at Cygnnet Holiday Park

Kingston

Dump Point: Behind Kingston Hotel, towards Browns Road wetlands

Gordon

Dump Point: Recreation Ground Channel Hwy, Gordon

Bruny Island

Dump Point: Alonnah Council depot

Computer Access *(call for opening hours info)*

Bruny Island

School Road, Alonnah P (03) 6293 2036

Cygnnet Community On-Line Centre Inc

14 Mary Street P (03) 6295 0068

Dover

'The Old School' Main Road P (03) 6298 1552

Geeveston Library

Church Street P (03) 6297 1582

Geeveston Community Centre – GeCo

6 School Road P (03) 6297 1616

Huonville – HuonLINC

1 Skinner Drive P (03) 6264 8482

Huon Valley Visitor Centre - Free WiFi

2273 Huon Highway P (03) 6264 0326

Huonville Esplanade - Free WiFi

Channel Highway

Kingston

11 Hutchins Street P (03) 6211 8500

Margate Primary School

1732 Channel Highway P (03) 6267 1066

Woodbridge West Winds Community Centre

3528 Channel Highway P (03) 6267 4691

Boating around the Huon Trail

The Huon Trail is surrounded by water with almost all of its townships sitting upon the edge of either the Huon River or the D'Entrecasteaux Channel making them easily accessible from the water. As a result, it is a haven for those travelling and exploring by boat with many sheltered bays offering overnight refuge.

Marina facilities are available at Margate, Kettering, Franklin and Port Huon.



Kettering Jetty



Huon River

Bruny Island

Bruny Island has many sheltered bays predominately on the western side of the island.

Boat ramp	Barnes Bay, Adventure Bay, Lunawanna, Dennes Point and Alonnah
Jetty	Dennes Point, Barnes Bay and Adventure Bay
Breakwater	Alonnah
Pontoon	Quarantine Bay

D'Entrecasteaux Channel

Boat Ramp	Gordon, Woodbridge, Middleton, Margate, Tinderbox and Kingston Beach
Jetty	Gordon, Kettering and Woodbridge
Breakwater	Gordon and Middleton
Pontoon	Woodbridge

Huon Valley

The townships of Huonville and Franklin are located upon the Huon River with Franklin offering easy access along its foreshore. The Cygnet township is only a short walk from Port Cygnet Bay. The settlement of Port Huon is easily accessible from the Port Huon Marina.

Boat ramp	Charlotte Cove, Port Huon (Shipwrights Point), Franklin, Huonville, Cradoc, Cygnet and Deep Bay
Jetty	Cygnet

Far South

Boat ramp	Southport, Catamaran, Dover and Surveyors Bay
Jetty	Southport and Dover

It is always recommended to check weather conditions before heading out on the water and be aware that conditions can change rapidly. Safety equipment should be well maintained and accessible at all times. Life jackets should be worn at all times. For more detailed information regarding marine safety, navigation markers and location of boat ramps etc. visit www.mast.tas.gov.au

Bruny Island

A land apart, an island in time – that's Bruny.

Bruny is a 15-minute crossing by car ferry from Kettering, 25 minutes south of Hobart. On the island, country roads loop around North Bruny, then cross the narrow Neck to South Bruny and the seaside hamlets of Adventure Bay, Alonnah and Lunawanna. Bruny is an island of beaches and forests, wildlife and heritage.

In the north, gentle crescents of golden sand smile, rare birds flit through the eucalypt canopy and Dennes Point's beachside shacks snuggle into the coastal scrub. To the south, Adventure Bay is a haven of history.



Bruny Island Premium Wines

The wild Southern Ocean crashes on the sweeping expanse of Cloudy Bay Beach and the Cape Bruny light flashes its message of warning and welcome.

Between, on a narrow thread of land, penguins and shearwaters nest in the safety of the sheltering dunes. In a day you can explore lonely beaches, walk through towering rainforest, gaze towards Antarctica beyond the empty southern horizon and quench your thirst in Australia's most southerly pub. (Or is it? Ask a friendly islander in the bar to tell you the whole story ...)

You can also explore the rugged Bruny coastline on an adventure cruise, where you are likely to be joined by pods of friendly dolphins as you discover soaring cliff faces, gliding sea eagles and fur seal colonies. During winter there is a good chance you will spot a migrating whale. All year round you are assured of stunning natural beauty, so whether you choose to explore Bruny Island by foot, by car or by sea, always keep your camera handy!

Bruny Island

ATTRACTIONS



Pennicott Wilderness Journeys

Map Ref J1



Dock Head Building, Franklin Wharf,
Hobart

P (03) 6234 4270

info@pennicottjourneys.com.au

www.brunytraveller.com.au



Bruny Island Traveller

18

Spend the day exploring the spectacular landscapes and gourmet local produce of Bruny Island. This is the ultimate foodie's day out where you can savour freshly shucked oysters, award-winning cheeses, premium wines, seasonal berries, handmade fudge and world-class whisky. Meet the local producers and hear their stories behind the bountiful harvest. See rare white wallabies, visit 'The Neck' lookout and walk along deserted beaches before indulging in a cellar door lunch. Tours depart daily from Hobart.



Bruny Island House of Whisky

Tasmanian Single Malt Whiskys

19

An outstanding representation of the Tasmanian single malt whisky industry. Over 45 Tasmanian single malts on tasting, home of Trappers Hut Single Cask Release. Rare, limited editions & special releases. Whisky & fine food pairing. Whisky flights. Gourmet platters, boutique provedore. Stunning water views. 3 km from the ferry terminal.

Map Ref J4

360 Lennon Road, Bruny Island

www.tasmanianhouseofwhisky.com.au

P (03) 6260 6344

houseofwhisky@bigpond.com

Forestvale Design Centre

A Remote, Unique Experience

20

79 Dillons Road, Alonnah, South Bruny Island M 0414 732 941 forestvaledc@gmail.com forestvaledesigncentre.com.au
Eclectic Arts & Crafts. Delicious Lunches. Blueberry Desserts. Panoramic Views. Beautiful Rare Birds.

Map Ref I8

Bruny Island Berry Farm



21

550 Adventure Bay Road, Adventure Bay P (03) 6293 1055 brunyberries@activ8.net.au brunyislandberryfarm.com.au

Open from late October until after Easter. Pick your own berries or buy in season. Licenced café. Map Ref J9

Bruny Island

ATTRACTIONS



Pennicott Wilderness Journeys

Map Ref J9

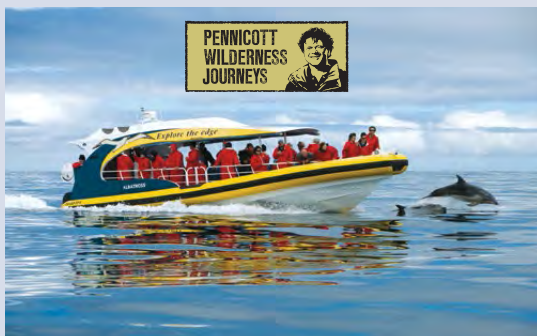


915 Adventure Bay Road, Bruny Island

P (03) 6293 1465

info@bruncruises.com.au

www.bruncruises.com.au



Bruny Island Cruises

22

Join the Winner of Australia's Best Tourist Attraction 2012 & 2014 and spend an unforgettable three hours exploring Bruny Island's rugged coastline. Feel the power of the Southern Ocean, discover deep sea caves and cruise alongside some of Australia's highest sea cliffs. Drift up close to the awesome 'Breathing Rock' and pass through the narrow gap between the coast and 'The Monument.' Search for dolphins, seals, migrating whales and seabirds. Cruises depart daily from Adventure Bay or join our Full Day Tour from Hobart.

ACCOMMODATION



Captain Cook Holiday Park ★★☆☆

Beachfront family accommodation



23

Fantastic location for the whole family. Straight across the road from the stunning Adventure Bay beach. We have one-bedroom villas with views and two-bedroom family cabins. We also cater for the campers and motor homes.

Map Ref J9

786 Adventure Bay Road, Bruny Island

P (03) 6293 1128

www.captaincookpark.com

info@captaincookpark.com



HIBA Bruny Island

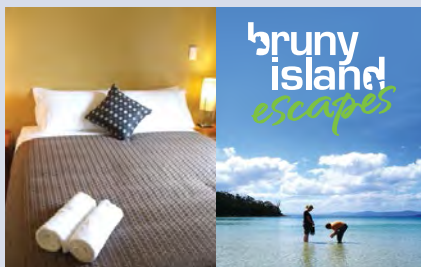
Bruny Island

ACCOMMODATION



- ✓ OPEN 7 DAYS
- ✓ ALL DAY LUNCH & DINNER
- ✓ FRESH LOCAL SEAFOOD
- ✓ MULTI AWARD WINNING ACCOMMODATION

1300 BRUNY HOTEL
03 6293 1148



Hotel Bruny

Food, wine, accommodation



Bruny Island Escapes

Accommodation across Bruny

★★★
Self rated

24

Visit the famous Bruny Island Hotel - come for a drink, a meal or stay longer to marvel at the uninterrupted views across the D'Entrecasteaux Channel in our refurbished motel suites. Hotel Bruny open 7 days - Bar, Bistro, Bottleshop.

Map Ref 18

3959 Main Road, Alonnah

P (03) 6293 1148 M 0427 931 271

info@brunyisland.com www.hotelbruny.com

The multi-award-winning Bruny Island Escapes offers a range of accommodation right across the island. From self-contained studio accommodation through to premium waterfront properties, each boasts a high level of privacy and comfort with cosy log fires and water views.

Map Ref 18

P (03) 6293 1271 or 1300 278 694 M 0427 931 271

info@brunyisland.com www.brunyisland.com



'Mirambeena'



Bruny Island coastline

Bruny Island Ferry Service Timetable

Travelling time from Hobart to Kettering Ferry Terminal is 40 minutes. The Bruny Island vehicular ferry from Kettering to Bruny Island will take approximately 15 minutes. Departure may vary without notice. Bookings are not required.

www.brunyislandferry.com.au

Timetable information (03) 6273 6725

General enquiries (03) 6272 2322

Depart Kettering

6.35am (not on Sunday)

7.45am

9.30am

11.05am

12.05pm

1.45pm

2.45pm

3.45pm

5.00pm

6.30pm

7.30pm (Friday only)

Depart Bruny Island

7.00am (not on Sunday)

8.25am

10.00am

11.35am

12.35am

2.15pm

3.15pm

4.30pm

5.30pm

7.00pm

7.50pm (Friday only)



The Apple Shed

Huon Trail Producers

The Huon Trail region enjoys a temperate climate with four distinct seasons. In general we have good rainfall that supports our magnificent old forests and our diverse agricultural base. The area has always been known for its apple growing industry and as with everything, times change. Today, the region is becoming known for producing fine seafoods, cool climate grapes, stone and berry fruits, mushrooms, saffron, grass fed beef and still our icon – apples. Much of our produce is either organic or free range.

Using the regions excellent produce, we are now making exceptional gourmet products including cheeses, wines, chocolates, jams, breads, ciders, bush foods, fruit juices, ice creams, yoghurts and much more which are showcased regularly at regional events and markets throughout the Huon Trail. Each of the markets offers a range of locally made goods and produce, arts and crafts, fresh fruit and veggies, preserves, locally pressed olive oils and food stalls.

When talented chefs have access to such excellent produce, you can be sure that dining along the Huon Trail is a special treat. Or, if you'd prefer to play hunter and gatherer, you can collect your produce along the Huon Trail and prepare a delicious meal at your accommodation.

Either way, sourcing locally grown and produced food is the simplest way of enjoying life and reducing 'food miles'!

A downloadable e-Brochure has been designed to assist you on your culinary adventure: e-Producers. Refer to <http://www.huontrail.org.au/free-downloads>



Kermadie Hotel and Marina

Community Markets

Huonville Market

1st and 3rd Saturdays of the month, year round 10am – 2pm
Huonville Town Hall & Surrounds, Main Street, Huonville
M 0400 478 013 E lungta@bigpond.com

Woodbridge Village Market

4th Sunday of the month, year round 10am – 2.30pm
Additional market 2nd Sunday of the Month Nov-Feb
Woodbridge Community Hall, Channel Highway, Woodbridge
M 0428 222 490 E woodbridgemarket@live.com.au

Kingston Beach Handmade Market

2nd Sunday of the month, year round 10am – 3pm
Kingston Beach Hall, 20 Beach Rd, Kingston Beach
M 0407 907 179 www.kbhm.com.au

Cygnnet Market

1st and 3rd Sunday of the month, year round 10am – 2pm
Cygnnet Town Hall, Mary Street, Cygnnet
M 0488 006 873 www.cygnnetmarket.com.au

Geeveston Farmers Market

Every Saturday, year round 9am – 1pm
Church Street, Geeveston
M 0497 341 104 E kdevinish@hotmail.com

Dover Market

2nd Sunday of the month, year round – 10am – 2pm
Southgate Shopping Centre, 1 Station Rd, Dover
E helen.ford@hotmail.com.au

The Market at Franklin

Last Sunday of the month, year round 10am – 2pm
Palais Theatre, Main St, Franklin
M 0459 026 428 E Natalie@simplyspellbound.com.au

Judbury Market

2nd Sunday of the month, year round 10am – 2pm
Judbury Community Centre, 1273 Glen Huon Rd, Judbury
P 03 6266 0228 E judburymarket@gmail.com

Kingston Rotary Market

Every Sunday, year round 8am – 1pm
Kingston Town Shopping Centre car park, Maranoa Rd, Kingston
M 0419 543 287

Snug Community Market

Last Sunday of the month, year round 10am – 2pm
Snug Community Hall, Beach Rd, Snug
M 0407 413 457 E snugmarket@gmail.com

Brookfield Market

1st and 3rd Saturday of the month,
Sept – May 10am – 2pm
Channel Highway, Margate
P 0414 428 645

The Shabby Market

Last Saturday of the month, Sept – June, 9am – 3pm
Redwood Village, Kingston
P 0498 944 527
E theshabbymarket@hotmail.com

Sandfly Community Market

Last Saturday of the month, year round 10am – 3pm
Sandfly Hall, Corner Sandfly and Pelverata Roads, Sandfly
P 0491 116 773
E market@sandfly.org



Geeveston Farmers Market



Colourful Bags



Roadside Stall

Calendar of Events

2015

Huon Show

Saturday 14th November 2015
Ranelagh Recreation Ground (near Huonville)
www.huonshow.com.au

2016

Cygnets Folk Festival

Cygnets Township
8th – 10th January 2016
www.cygnetsfolkfestival.org

Breakfast by the River

Franklin Oval, Franklin
Tuesday 26th January 2016
www.huonvalley.tas.gov.au/events/

Kingston Beach Regatta/A Day on the Beach

Kingston Beach
Tuesday 26th January 2016
www.adayonthebeach.com.au

Middleton Country Fair/Expo Scarecrow Competition

Sunday 6th February 2016
www.middletonexpo.southchannel.com.au

Southern Vineyards Open Weekend

Sunday 6th March 2016
www.winesouth.com.au

Cygnets Regatta

Sunday 13th March 2016
www.cygnetsailing.org.au

A Taste of the Huon

Ranelagh Recreation Ground
13th and 14th March 2016
www.tasteofthehuon.com

Love Living Locally

Sunday 20th March 2016
Kingborough Civic Centre, Kingston
www.lovelivinglocally.com

Huon Tasmanian Salmon Port Esperance Regatta

Easter weekend 25th, 26th & 27th March 2016
Port Esperance Sailing Club, Dover
www.pesc.com.au

Art Farm Birchs Bay Sculpture Prize

Good Friday 25th March – 30th June 2016
Art Farm Birchs Bay Sculpture Trail
www.artfarmbirchsbay.org.au

Targa Tasmania

11th – 16th April 2016
www.targa.com.au

Huon Valley Mid Winter Festival

July 2016
The Apple Shed, Huonville
www.huonvalleymidwinterfest.com.au

Visit www.huontrail.org.au/events to confirm these dates and the dates and times of many other events and markets along the Huon Trail.



A Day on the Beach, Kingston



A Taste of the Huon



Cygnets Folk Festival



Huon Show



Huon Valley Mid Winter Festival



Pagan Cider Boxes



Home Hill Winery

Wine and Cider Trails

The Huon Trail region has had a strong history of producing award winning wines over many years, and has been a destination for enthusiasts for some time. More recently, this has been complimented by the emergence of several new wineries many of which produce smaller amounts of top quality wines.

Several of the larger wineries have cellar doors open every day year round, and offer a dining experience either formal or casual. Some of the smaller boutique wineries open to the public on weekends throughout the warmer months and there are many that will open by arrangement for groups and private tours.

Many of the small wineries without cellar door facilities are open to the public on the first weekend in March each year during the Southern Open Vineyards Weekend. For more information visit <http://www.winesouth.com.au/> or <http://www.huontrail.org.au/where-to-eat-and-drink/wineries-vineyards-and-breweries>

The Huon Trail also has an abundance of quality cider producers - some of which have cellar doors while others offer cafes, museums and private venue space. It makes sense that the Apple Isle would be the cider capital of Australia and that the south would be the pick of the crop!

Growing apples is not new to this region; however, what is relatively new is the innovation by some of these growers to move on to producing cider. Some of these families have been orchardists for up to four generations and others have lived in the region for six generations. They have found it necessary to reinvent themselves and their farms to move forward into the future. And what a fabulous reinvention it has been!

Not only are apples used in the making of these fabulously refreshing drops - pears, cherries and even quince are being used and the end results are amazing! Each of the cider producers has developed their own techniques and specialities, and some have even gone to the extent of turning their farm upside down to become certified organic!

It's all about the stories and history behind the people and characters that grow the fruit and make the cider. You can discover these stories when visiting the cideries, talking with the growers and the dedicated people working for them.

For some more information visit <http://www.tascidertrail.com/>

Huon Valley

Valley of sunshine and mists, of fruitful orchards and rich soil, of riverside settlements and towns on the forest fringe, the Huon is a valley of surprises. Here, you can savour the fresh produce of the land and sea, sweet summer berries, crisp autumn apples, full-flavoured wines, and the mouth-filling flavours of salmon and shellfish.

Tucked away in quiet, creative corners you'll find the galleries and studios of artists and craftspeople, where beautiful things are made from paint, clay, glass and fragrant Huon pine.



Huonville

The hub of the district is the busy, productive centre of Huonville, an apple town on the banks of the river. Across the bridge, you'll follow the valley south to Franklin, where timber shavings curl from the boat-builders' planes, and traditionally-built craft tug at their moorings beyond the workshop.

Further south brings you to the forest and timber town of Geeveston, with its rich forest heritage of bushmen and pioneers, winning a hard living from the tall trees on the edge of the wilderness. This is your gateway to the far south.



Kermadie Marina

Driving Times

Hobart	to Huonville (A6)	35mins
Hobart	to Tahune Airwalk (A6 & C631)	90mins
Hobart	to Dover (A6)	75mins
Huonville	to Geeston (A6)	20mins
Geeston	to Tahune Reserve (C631)	35mins
Geeston	to Hartz Mountain NP (C631&2)	40mins
Geeston	to Dover (A6)	20mins
Dover	to Cockle Creek (A6 & C636)	60mins
Hobart	to Margate (via Taroona B68)	25mins
Hobart	to Kettering (A6 & B68)	35mins
Kettering	to Verona Sands (B68)	25mins
Verona Sands	to Cygnet (B68)	15mins
Oyster Cove	to Cygnet (C626)	20mins
Woodbridge	to Cygnet (C627)	20mins
Cygnet	to Huonville (via B68)	20mins
Roberts Point	to Adventure Bay (B66 & C630)	15mins
Roberts Point	to Bruny Lighthouse (B66 & C639)	45mins
Roberts Point		70mins

Driving times listed are intended as a guide only



Huon Valley

ATTRACTIONS



Cygneture Chocolates

Handmade Chocolates & Confectionery

25

Cygneture Chocolates creates award winning handcrafted chocolates, bars, honeycomb, caramels, and so much more in our little shop in Cygnet. We source the finest local produce from across Tasmania, focusing on Cygnet, the Huon Valley & the Channel.

Map Ref G6

20 Mary Street, Cygnet
M 0408 970 440

www.cygneture.com.au
gillian@cygneture.com.au



Yukon Tours - Franklin

Calm water cruise, 90 minutes



26

Sail the beautiful traditional Danish ketch 'Yukon' on the calm waters of the Huon River. All ages welcome, no prior sailing experience needed. Sit back and enjoy the Huon Valley's premier sailing cruise. Also available for gourmet cruises, overnights and private functions.

Map Ref F4

Franklin Marina (next to Wooden Boat Centre) www.yukon-tours.com.au
M 0498 578 535 yukonsailingtours@gmail.com



Wooden Boat Centre – Franklin

Traditional timber boat building



27

See special Tasmanian timbers as they are hand-crafted to create boats which display Tasmania's rich maritime heritage. Take in the scent of Huon Pine and the unique atmosphere of a traditional workshop in action by taking a guided tour. Enjoy our historical display of maritime memorabilia or browse the gift shop.

Map Ref F4

Main Road, Franklin
P (03) 6266 3586

www.woodenboatcentre.com
info@woodenboatcentre.com



The Honey Pot

A Unique Tasmanian Honey Experience



28

Free Tasting of Leatherwood honey, Tasmanian Manuka Honey and more. Observe the activities of the bees and spot the queen bee from behind our glass beehive. Delicious honey icecream, mead, skincare and gifts. Location: Huon Valley Visitor Centre. Free Admission. Open Every Day.

Map Ref F3

2273 Huon Highway, Huonville
P (03) 6266 0342 M 0408 052 606

www.thehoney-pot.com
info@thehoney-pot.com

Huon Valley

ATTRACTIONS



Museum, Ciderhouse & Organic Store

Map Ref G3

2064 Huon Highway,
Grove

P (03) 6266 4345

appleshed@williesmiths.com.au

www.williesmiths.com.au



The Apple Shed

29

In the rustic surrounds of an original apple shed built in 1942, learn about the Huon's fascinating apple heritage told through the eyes of Willie Smith. A range of delicious ciders is available at cellar door and the café serves a simple menu of the finest regional products.

A small providore will enable local producers an outlet in the Huon Valley where they can showcase their products and produce to visitors to the State.



The AirWalk Lodge

Map Ref B4



Arve Road via Geeveston

P 1300 720 507

tahune-bookings@forestrytas.com.au

www.tahuneairwalk.com.au



Tahune AirWalk

30

Experience the power of nature at southern Tasmania's must-see attraction, the Tahune AirWalk. There's fun for the whole family with breathtaking views of the forest canopy, spine-tingling swinging bridges, mountain bike trails, Eagle hang gliding and Tasmanian food and wine in the licensed café. Can't fit it all into one day? Stay at the new AirWalk Lodge and sleep among the giants of the forest! With exclusive night-time trails, southern Tasmania's premier tourism destination is yours to explore.

ATTRACTIONS



31

Tasmanian timber furniture made on-site to your design or ours.
Enjoy exploring many different art forms created by our resident Artisans.
Our café has many delights to tempt your taste buds. Caters for all dietary requirements. Lactose free milk available. Something for everyone.
Free Entry - RV parking friendly.

11 School Rd, Geeveston (off A6) www.southerndesigncentre.com.au
P (03) 6297 0039 F (03) 6297 0039 southdesign@bigpond.com

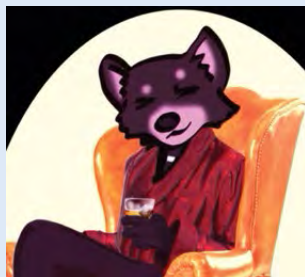


Map Ref E6

14 Church Street, Geeveston
M 0407 056 0972
makersonchurchst@gmail.com
www.makersonchurchst.com.au

32

A delightful, intriguing, friendly place to visit - where you can shop for original handmade gifts and furniture made from Tasmania's unique timbers. Local handmade articles include the popular DeEmDe children's clothing range, woodcraft, paper craft, knitting, cards, crocheting, jewellery, felting, teddies and so much more. Select range of Tasmanian honey, jams, mustards, relishes and fudge. Also houses a large book store with hard to source titles, knitting yarns and supplies. Geeveston only a 45 minute drive south of Hobart.



33

Shop Online or visit us to enjoy the best selection and lowest prices around. We have 350+ square meters filled with a huge variety of Tasmania Souvenirs, Local Woodwork, & Giftware. We are also home to "The Starving Artist" art gallery and "Spoil Mee" lingerie.

Map Ref F3

195 Main Road, Huonville
P (03) 6264 3198

www.devilsden.com.au
info@devilsden.com.au

Huon Valley

ATTRACTIONS



Jet boating on the Huon River

Map Ref F3



Esplanade, Huonville

P (03) 6264 1838 F (03) 6264 1031

info@huonjet.com

www.huonjet.com



Huon Jet

34

Come jet boating on the Huon River. Experience the thrill of white water jet boating and view the magnificent reflections in the dark tannin-stained water. To add to the excitement, your driver executes a number of 360 degree spins, all in complete safety. Rides depart regularly throughout the day. For the less adventurous, stretch your legs on our Pedal Boats and Aqua Bikes, or just sit and enjoy a coffee or snack in our riverside café. Tasmania's only white water jet boating adventure just 35 minutes south of Hobart.

ACCOMMODATION



Cygnet's Secret Garden B&B

Luxury Bed and Breakfast Accommodation

35

Spoil yourself in our 1913 Federation home. Wake up refreshed and savour your home cooked breakfast. Indulge yourself in the food and wines of the valley. Finish your day with a complimentary port. Hear and see the birds. 40 minutes from Hobart. Free WiFi.

Map Ref G6

7 Mary Street, Cygnet

(03) 6295 0223 M 0408 281 046

www.cygnet-secret-garden.com.au

hosts@cygnet-secret-garden.com.au



Cobweb Designs - Cygnet

Huon Valley

ACCOMMODATION



Self-contained in beautiful, quiet surroundings

Map Ref E4



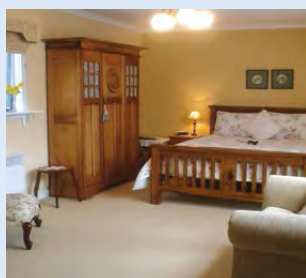
253 Swamp Road, Franklin (off A6)
P (03) 6266 3341 F (03) 6266 3342
info@whisperingspirit.com.au
www.whisperingspirit.com.au



Whispering Spirit Holiday Cottages and Miniature Pony Stud ★★★★★

36

Refreshing retreat with valley and mountain views and secluded gardens. Watch the foals play in the paddocks and meet the ponies. Experience the farm life, go for walks, look out for the platypus. Cosy one-bedroom cottage and strawbale house with a luxury spa-bath and two-bedroom ensuites, and hearty breakfast provisions for the first night. The perfect place to experience everything in this area. Well suited for longer stays at very reasonable rates. Multi-night and weekly discounts. Awarded Green STAR Environmentally Friendly.



Walton House B & B in Huonville ★★★★★

Luxury accommodation

37

4 1/2 star accommodation in a very central location, just zoom to restaurants and shops. Three large comfortable queen size ensuited rooms via a dedicated guest entrance which ensures your privacy. Enjoy a freshly prepared continental breakfast in the central dining area. Free wifi available. Give yourself time and Walton House will provide the **REST**.

Map Ref F3

2720 Huon Highway, Huonville
P (03) 6264 1640

www.waltonhouse.com.au
waltonhouse@bigpond.com



Talune

Self-contained cabin



38

Peaceful rural setting on small farm. Double bedroom, small second bedroom with three bunks. Fully self contained, safe play area. Ideal base to tour Huon Valley, Bruny Island or rest. Ten minutes to safe sandy beaches. Five minutes to Cygnet, shops, food, coffee. Pets welcome.

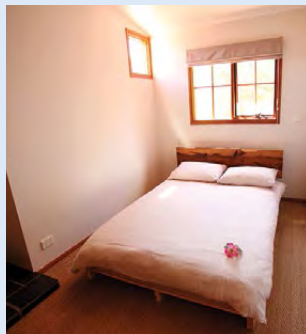
Map Ref G6

1106 Woodbridge Hill Road, Gardners Bay
P (03) 6295 1775

www.talune.com.au
wombat@talune.com.au

Huon Valley

ACCOMMODATION



Create a healthier YOU!!!

Map Ref G6



51 Chuter Street, Deep Bay, Cygnet
M 0427 651 032
info@tranquilpoint.com
www.tranquilpoint.com



Tranquil Point

39

A stunning 3 acre property with 270 degree ocean views, B&B overnight and longer term accommodation, retreat packages, a Bikram Yoga studio, organic shop & massage. With 7 light-filled, comfortable guest rooms, wholesome organic meals are included. The Bikram Yoga Studio operates daily and the Organic Shop stocks over 200 products sourced from the Huon Valley, across Australia and around the world. Massages are available by appointment. Tranquil Point is a world class healing space.



Stay and cruise the Huon River
Map Ref E5



4396 Huon Highway, Port Huon
P (03) 6297 1060 F (03) 6297 1057
stay@porthuoncottages.com.au
www.porthuoncottages.com.au
www.franklinecruises.com.au



Port Huon Cottages & Franklin Eco Cruises

40

Perfectly located to use as a base while exploring the treasures of the Huon Trail; near major attractions such as the Tahune Airwalk, Hastings Caves and Ida Bay Railway. The cottages are fully self-contained each with its own barbeque and balcony with stunning views over Port Huon Bay. During your stay experience a two hour **Franklin Eco Cruise** on the picturesque Huon River. Learn the history of the area while viewing the abundant birdlife on the shores and enjoying morning/afternoon tea.

Huon Valley

ACCOMMODATION



Kermandie Hotel ★★☆☆

Country hospitality and ensuite accommodation

41



A scenic 45-minute drive south of Hobart. Modern ensuite rooms and guest lounge. Enjoy a drink in the refurbished lounge bar with glorious views of the Huon River, indulge in some local produce in our SASS Restaurant.

Map Ref E5

4518 Huon Highway, Port Huon
P (03) 6297 1052 F (03) 6297 0064

www.kermandie.com.au
kermandie@kermandie.com.au



Huonville Guesthouse

Very private studio-style accommodation

42

Luxury, self-contained accommodation with your own private entrance. The former apple orchard homestead (c1890) caters for 7 guests in 3 unique and spacious studios all with modern ensuites and kitchenettes. The perfect base for exploring southern Tasmania and only 30 minutes from Hobart.

Map Ref F3

184 Main Road, Huonville (A6)
P (03) 6264 1615

www.huonvilleguesthouse.com.au
stay@huonvilleguesthouse.com.au



Kermandie Lodge

Closest Motel to Tahune AirWalk

43

Motel units have queen or twin-share beds, ensuite, coffee and tea facilities. Villas are fully self-contained with stove, microwave and HDTV. Units sleep up to five. Off street parking, meals available nearby. Member of Budget Motel Chain.

Map Ref E5

4512 Huon Highway, Port Huon
P (03) 6297 1110

www.kermandielodge.com.au
stay@kermandielodge.com.au

Green Gables B&B *Luxury Accommodation with a 'Touch of Paris'*



44

6974 Channel Highway, Cygnet P (03) 6295 0400 M 0414 802 010 bnb@green-gables.com.au www.green-gables.com.au
Private B&B and S/C apartments with waterviews in garden setting. Breakfast/tea/coffee provisions. Free WiFi. Map Ref G6

Donalea B&B and Riverview Apartment

45

9 Crowthers Road, Castle Forbes Bay P (03) 6297 1021 donalea@bigpond.com www.donalea.com.au
Waterfront Bed & Breakfast and Riverview self-contained apartment set amidst beautiful gardens. Free WiFi. Map Ref E5

Huon Valley

ACCOMMODATION

A wide selection of accommodation, attractions and information



Waterways, wilderness and wildlife. A Huon Valley Escape for any budget.

Waterways, wilderness and wildlife

Map Refs F3, I6, D10



Accommodation near Huonville, Dover,
Bruny Island and Lune River

P 1800 770 224

info@huonvalleyescapes.com.au

www.huonvalleyescapes.net

Huon Bush Retreats and Huon Valley Escapes

Huon Valley Escapes has accommodation and activities from Hobart to Bruny Island and the Far South, including:

Huon Bush Retreats: Self contained cabins, deluxe teepees and camping in a private habitat reserve near Huonville.

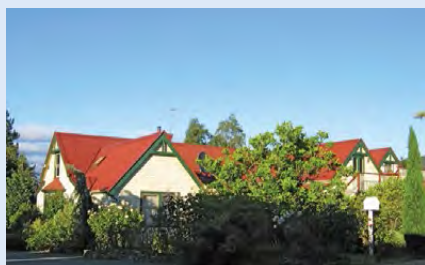
Yooringa Garden Cottage: Self contained holiday house in a beautiful garden at Flowerpot, near the Bruny Island ferry.

Buttongrass Retreat: Self contained cabin adjacent Ida Bay Railway, near Southwest National Park and Hastings Caves.

46

47

48



*19th century charm
21st century luxury*

Map Ref G2



Crabtree House and River Cottages

49



The Heritage Apartment and The Loft are self-contained apartments that are both quiet and very private. The Loft sleeps up to four while The Heritage Suite is designed for a single couple. Total luxury in a secluded environment. WiFi and BBQs.

130 Crabtree Road, Grove

M 0429 626 640

www.crabtreehouse.com.au

Crabtree River Cottages are self-contained and are situated on Crabtree River. Fireplaces, spas, large decks and BBQs make staying here an absolute luxury.

130A Crabtree Road, Grove

M 0418 190 384

www.crabtreerivercottages.com

Huon Valley

ACCOMMODATION



Geeveston's historic home
Map Ref E6

2 School Road, Geeveston
P (03) 6297 1561
info@cambridgehouse.com.au
www.cambridgehouse.com.au

Cambridge House B&B ★★ ★★ ★

50

Step back in time and take modern day comfort with you. Exuding warmth, this large, lovingly restored, heritage-listed (c1870) home with spacious queen ensuite rooms and guest lounge, is the perfect base for exploring all of the Huon Trail. Sumptuous cooked breakfasts served in the sunny dining room are included. Separate guest entry ensures privacy. And Yes! – we really do have platypus living at the bottom of the garden! Free WiFi and off street parking.

Arundel Cottages

51

643 Silver Hill Rd, Glaziers Bay P (03) 6295 1577

Well-equipped cottage for four. Sunny deck and garden. Short stroll to beach. Long-term rental by negotiation. Map Ref F5

The 2C's Bed & Breakfast *Affordable, Comfortable, Self Contained Accommodation*

52

1 Crooked Tree Court, Cygnet P (03) 6295 1603 M 0409 501 345 www.the2cs.com.au cbwin100@hotmail.com

Overlooks Cygnet Bay and in a peaceful garden setting this accommodation is a few minutes from the Cygnet township. Map Ref G6

WINERIES AND DINING



Two Bud Spur Vineyard

Winery and Cellar Door

53

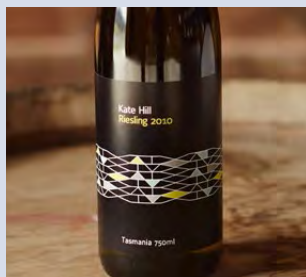
Two Bud Spur specialises in hand-crafted wines that capture the essence of our cool-climate region. Visit our eco-friendly strawbale winery and cellar door and try our medal-winning wines; Pinot Noir, Chardonnay, Sauvignon Blanc, Gamay and Gewürztraminer. Open weekends through summer 11am-5pm, other times by appointment.

Map Ref G6

1033 Woodbridge Hill Road, Gardners Bay www.twobudspur.com.au
M 0429 006 486 vinesandwine@twobudspur.com.au

Huon Valley

WINERIES AND DINING



Kate Hill Wines

Winery and cellar door

54

Visit our family-owned, 19th century apple shed winery in the heart of the picturesque Huon Valley. Meet Kate and sample our limited-production sparkling and table wines. Open Sundays, 11-4pm November to end May.

Map Ref F3

101 Glen Road, Huonville
M 0448 842 696

www.katehillwines.com.au
info@katehillwines.com.au



Cellar door and restaurant
Map Ref F3

38 Nairn Street, Ranelagh
P (03) 6264 1200 F (03) 6264 1069
info@homehillwines.com.au
www.homehillwines.com.au



Home Hill Winery Restaurant



55

Home Hill is the perfect place to celebrate the good things in life, a place to relax and enjoy fresh local produce served in our restaurant and award winning cool climate wine that appeals to the most discerning palate. Pinot Noir Awarded – Producer of the Year in 2013, 2014, 2015 at the Tasmanian Wine Show. Plus alpacas & gift shop. Lunch served every day from September to May and five days from June to August – Thursday to Monday. Cellar door open 7 days.



ds Coffee House, Café Lounge

Café meals, coffee, internet and ambience

56

'ds' is a café with a difference. We have an eclectic, homely ambience, outside dining area, a warm fireplace, fast Internet and WiFi and a private function room is also available. Browse through our magazines and books while enjoying our quality coffee and teas, home made meals, cakes, slices and pies. Vegan and G/F options available. Open 7 days from early to late. Fully licensed.

Map Ref F3

10 Main Road, Huonville
P (03) 6264 1226

dscoffeehouse@bigpond.com

Huon Valley

WINERIES AND DINING



Cider Bar, Cafe and Museum

Map Ref F4

3328 Huon Hwy, Franklin
M 0438 663 525 F (03) 6266 3525
naomie@frankincider.com.au
www.frankscider.com.au



Frank's Cider Bar and Café

57

The cellar door of FRANK'S CIDER is located in the historic town of Franklin. The 1870s former St John's Church Hall, is now a cosy bar and cafe which specialises in gourmet local produce. Prepare to feast on delicious local beef, lamb and of course, salmon from the pristine Huon River. Free cider tasting too! Wander through the adjacent Jane Franklin Memorial Museum while you sip an award winning sparkling cider, and discover the fascinating history of the Huon Valley.
Open 7 days Sun -Thurs 10 - 5 Fri - Sat 10 - late.



Boat House Café

Restaurant quality food at takeaway prices

58

Dine afloat on the spectacular Huon River with renowned, freshly prepared Fish & Chips. Spoil yourself with a variety of Tasmanian caught seafood and a glass (or two) of local beer, cider, wine or a cup of locally roasted coffee. On sunny days, enjoy your meal outside on the riverbank or on our top deck. Kids will love the playground, duck feeding and nearby paddle and jet boating. Check out our Facebook page for opening hours.

Map Ref F3

3 The Esplanade, Huonville
P (03) 6264 1133

See our Facebook page
www.boathousecafe.com.au



Huon River - Franklin

History and Heritage

The Huon Trail region has been shaped by a rich history of whaling, timber cutting, boat building and fruit growing.

Cockle Creek in the Far South sits on beautiful Recherche Bay at the edge of the South West National Park and Tasmania's World Heritage Wilderness Area. It is the furthest point south that you can drive in Australia. It was once a settlement with over 2,000 residents. Its rich human history can be found today in Aboriginal sites, abandoned tramways, gravestones and ruins. It also tells the earlier story of the French explorer Bruni D'Entrecasteaux, who visited the area twice on scientific and botanical expeditions in the 1700s.

The first Europeans to set eyes on the Huon River were the crew commanded by Admiral Bruni D'Entrecasteaux. The river was named by him in honour of his second in command, Captain Huon de Kermadec. The name is preserved today in many features, with a town, river, and the district all bearing his name.

Today the Huon Valley is best known as one of Tasmania's primary apple growing areas. Once enormous in its extent, the significance of the industry has declined steadily since the 1950s. Today cherries and aquaculture are the emerging economic drivers for the region.

The Huon River and the nearby D'Entrecasteaux Channel are popular fishing and boating areas. The Channel is sheltered from the wrath of the Southern Ocean by the bulk of Bruny Island to the east.

Poised on the edge of the south-west wilderness, forestry has been an important economic driver to the area since colonisation.



Historic apple labels



Geeveston circuit incorporating the platypus walk

Welcome to the timber town of Geeveston! Here you can take a self-guided walking tour of the town's rich heritage with the Geeveston Circuit and Platypus Walk. Starting outside the Forest and Heritage Centre in the heart of the town, the trail meanders through Heritage Park showing the town's close connection with its pioneer heritage. Follow the signs and learn more about this beautiful and resourceful town. Hear stories of hardship and wonder while you step back to a time where small men battled the giants of the forest.

Use the map to navigate your way around, and be sure to stop by the Platypus Lookout for a glimpse of the mystical creature that calls the Kermadec River its home.



Cycling on the Huon Trail

The Huon Trail presents many cycling opportunities for the family, RV travellers, adventure touring, intrepid road cyclists and mountain bike excitement.

Huonville

If you are staying around Huonville there is a 22 km loop ride upstream past the bridge to Glen Huon and Judbury. The return loop heads downstream past Ranelagh to Huonville (some dirt road).

Franklin is just 8 km past the Huonville Bridge (road ride), visit this historic town with its rich maritime history.

There is a network of back roads through Ranelagh, Lucaston, Crabtree and Mountain River while the Huon Highway has a good shoulder for riding. Around this area there are a variety of 'fuel' stops – whether you are looking for a light lunch or a refreshing wine or cider tasting along the way. If you don't have a bike, hire one from Huon Valley Bicycle Hire in Wilmot Road.

Cygnets

Cygnets is much favoured by local cyclists. One ride not to miss is the day loop around the Cygnets Coast Road. The full circuit is about 30 km but the scenic views along the Huon River are magical. "Where to Ride Tasmania" provides detail of this ride but any road map would suffice - visit <http://bicyclingaustralia.com.au/wheretoride/books/tasmania/> for stockists.

Bruny Island

Bruny Island is a delight by bicycle with little traffic outside the ferry crush. The Adventure Bay neck between North and South Bruny is about 30 km from the ferry terminus. There is another dirt road loop on North Bruny to Dennes Point. These rides are best suited to a visit over several days as there is so much to see and taste while the ferry is free for cyclists! "Where to Ride Tasmania" provides detail of these rides but any road map would suffice.



Mountain bike trail



Cyclists on Huon Road

Dover

The Esperance Coast Road from Dover to Police Point extends for 20 km with some short, steep undulations. It is a short 7 km ride to visit Roaring Beach by bike from Dover.

Mountain Bikes

Trails abound along forestry or coastal roads from Bruny Island to Cockle Creek but there are also specific mountain bike trails at Geeveston, Pelverata, Snug, Conningham and Margate to name a few. The best online reference can be found at <http://tassietrails.org/>

The Full Monty

There is a self guided tour that combines cider, food, wine and wilderness experiences starting and finishing in Hobart. Around 240 kilometres in length, this circuit ride is best completed by enjoying plenty of relaxing rest days tasting ciders with cheese, a glass of award winning pinot noir next to a river, camping on Bruny Island next to a beach eating oysters or take some time out from riding to experience the southern ocean on an adventure cruise. Many local cycling enthusiasts frequent the Channel Highway route as a long and difficult day ride. It gained a standing in the Top 25 Most Scenic Day Rides in Ride On magazine.

Far South

*M*other Nature is at her most spectacular in this part of Tasmania – dazzling dolomite caves, thermal springs, deep blue waters, brilliant white beaches, cool fresh rainforests and golden sunsets. Beyond the mouth of the Huon River, the landscape is wilder, the peaks steeper, the sea a deeper blue – you're getting closer to the end of Australia's most southerly road on the rim of the continent.

Along the way, the fishing fleets of Dover and Southport shelter in the deep bays where the first European navigators dropped anchor. Today, the people of these seaside towns harvest the cold, clean waters of the Channel and the Southern Ocean catching the freshest oysters and mussels, succulent crayfish and delicate salmon that end up in restaurants and cafés throughout Tasmania and abroad.



Camping by the Huon River



Ida Bay Railway

To the west are the peaks of the World Heritage wilderness. In valleys running back into the hills are the world's tallest flowering plants, the mighty Swamp Gums.

Higher up in sub-alpine rainforests are the survivors of the break up of Gondwana, the southern super continent – plants like myrtle, celery top pine and deciduous beech (Australia's only native deciduous tree) can be found here, plants whose ancestors lie as fossils in Antarctic rock.

Follow the route further south to Recherché Bay, a place of whales and history, timber cutters and fishermen.

At Cockle Creek one road ends, and a longer trail begins – the multi-day hike along the South Coast Track threads its way down to the sea, where the waves of the Great Southern Ocean crash endlessly on the sands of South Cape Bay.

Far South

ATTRACTIONS



Heritage-listed bush railway

Map Ref D10



328 Lune River Road, Lune River (C636)

P (03) 6298 3110 M 0428 383 262

meg@idabayrailway.com.au

www.idabayrailway.com.au



Ida Bay Railway & Café

59

Enjoy a scenic return trip of 14km and 2 hours' duration on a heritage-listed bush railway that meanders through bushland and along the water's edge to a safe and secluded beach. Walking tracks to Southport Lagoon and Southport Bluff. Picnic and BBQ facilities at beach and station. Enjoy some of the unique local history from your guide, on this tour back in time. Tour times may vary seasonally – please check website or call us before visiting.



Experience the natural attractions

Map Ref D9, D10

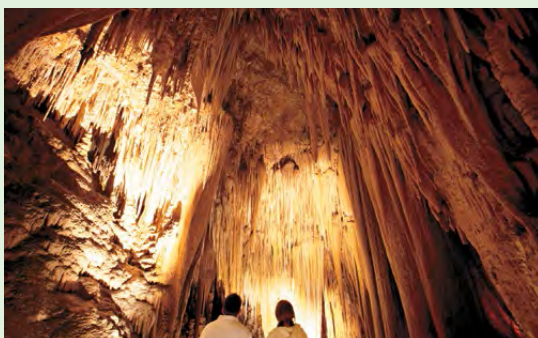


754 Hastings Caves Road, Hastings

P (03) 6298 3209 F (03) 6298 3103

hastingscaves@parks.tas.gov.au

www.parks.tas.gov.au/reserves/hastings



Hastings Caves and Thermal Springs

60

1 hour south of Huonville (C635 off A6).

Be fascinated and enchanted by entering one of the world's great dolomite caves. Experience nature's best with forest walks, picnic facilities and the 28 degrees celsius naturally-heated spring water swimming pool. Guided cave tours, visitor centre, snacks, barbecues, short walks. Open every day of the year except Christmas Day. Operating hours vary seasonally—please check website or phone before visit.

Far South

ATTRACTIONS

Dover Museum and Gallery

61

Dover Old School, Huon Highway, Dover M 0417 092 248 doverhistorygroup@gmail.com
Viewing the Far South through heritage and art. [Map Ref F8](#)

ACCOMMODATION



Southport Hotel & Caravan Park ★★★

62

Australia's southernmost hotel

Set in the beautiful seaside town of Southport, the park offers a range of accommodation including motel units, cabins, powered and unpowered sites. Laundry, general store and fuel available. Pet friendly. Southport Hotel offers a family-friendly environment with great country-style meals seven days a week.

[Map Ref E10](#)

8777 Huon Highway, Southport www.southportcaravanpark.com.au
P (03) 6298 3144 F (03) 6298 3268 info@southportcaravanpark.com.au



Dover Beachside Tourist Park



Where the forest meets the sea

Self-contained 1 and 2 bedroom cabins with ensuites, 70 powered and unpowered sites, laundry, BBQ. Ideal beachside accommodation for magnificent walks, boating, fishing and golf. Close to shops, Tahune AirWalk, Hartz Mountains, Hastings Caves and Thermal Springs, Ida Bay Railway and Cockle Creek.

[Map Ref F8](#)

27 Kent Beach Road, Dover www.dovertouristpark.com.au
P (03) 6298 1301 F (03) 6298 1301 info@dovercaravanpark.com.au



Ashdowns of Dover

64

Worth leaving home for

Traditional country house thoroughly modernised and wheelchair accessible provides guests with comfortable, well-appointed en-suite rooms with TV/DVD, free WIFI & mini-bar. Set on a small farm in Dover within walking distance to shops, restaurants & beach. Experience warm hospitality and locally sourced delicious cooked breakfasts.

[Map Ref F8](#)

6957 Huon Highway, Dover info@ashdownsofdoover.com.au
P 0417 746 437 www.ashdownsofdoover.com.au



Far South

ACCOMMODATION



Luxury...absolute waterfront
Map Ref F8



Managed by Essentially Tas
c/o 51 Bay View Road, Dover
P 1800 353 983
info@essentiallytas.com
www.tidesreach.com.au



Tides Reach

65

Spoil yourself in luxury with absolute waterfrontage... This beautifully appointed cottage overlooks Port Esperance Bay in the charming town of Dover, just over an hours' drive from Hobart. Enjoy the magical views with a glass of local wine or step off your private verandah onto the white sands of Pottery Beach. The ideal romantic retreat with two queen bedrooms, a spacious living area and a gourmet kitchen with all conveniences, making it the ideal getaway for one or two couples.



Experience nature in quiet luxury
Map Ref F8



Managed by Essentially Tas
c/o 51 Bay View Road, Dover
P 1800 353 983
enquiries@peninsulatas.com
www.peninsulatas.com



The Peninsula Experience

66

Escape to your own piece of paradise, nestled in the beauty and tranquility of Tasmania's Huon Valley. Just over an hour south of Hobart, The Peninsula offers the ultimate luxury getaway for couples or small groups (adults only). Set on your own private peninsula, five minutes from the fishing village of Dover, this unique property offers unsurpassed accommodation with your own private hot tub under the stars and 250 acres of forest, grasslands, water and wildlife to explore.

Far South

ACCOMMODATION



Exclusive...private...luxurious

Map Ref F7



Managed by Essentially Tas
c/o 51 Bay View Road, Dover
P 1800 353 983
info@essentiallytas.com
www.esperancelanding.com.au



Esperance Landing

67

A truly exclusive experience for your private getaway. Located on the waterfront at Brooks Bay, this brand new 3 bedroom house sits between the townships of Dover and Geeveston. A true retreat...this special property is for those looking to really get away from it all, in quiet surroundings with a magical outlook. Immerse yourselves in your private hot tub, stroll to the waterfront or just enjoy the stunning views from your expansive deck while you indulge in local Tasmanian fare...



Deluxe waterfront accommodation

Map Ref F8



Managed by Essentially Tas
c/o 51 Bay View Road, Dover
P (03) 6298 1441
info@driftwoodcottages.com.au
www.driftwoodcottages.com.au



Driftwood Cottages

68

Choose from our range of self-contained studios and cottages, all designed to make the most of the stunning waterways of Tasmania's Huon Valley and Far South. Whether you are seeking a luxury getaway, a family holiday or a corporate retreat... Driftwood offers a range to suit every need. Relax and enjoy your idyllic surroundings from your own private deck or verandah; stroll along the sandy beaches or spoil yourself with local wines and gourmet produce while you take in the magnificent views over Port Esperance Bay...

Waterways and Wilderness

The Huon Trail is the southernmost region of Tasmania and is surrounded by pristine waterways and world heritage wilderness. The major settlements hug the coastline and have become a major focus of industries such as fishing, aquaculture and tourism.

D'Entrecasteaux Channel

The D'Entrecasteaux Channel is an expanse of water between Bruny Island and the south-east mainland of Tasmania. It extends between the estuaries of the Derwent and Huon Rivers. It was sighted by Abel Tasman in 1642 and surveyed in 1792 by Bruni D'Entrecasteaux.

Along its Tasmanian mainland coastline are situated several coastal towns which embrace their proximity to the water. Boating, fishing and water sports are all an important part of everyday life as well as offering many opportunities for the visitor.

Bruny Island

An Island off an island, off an island...

Bruny Island is an important bird area, it supports the world's largest population of the endangered Forty-Spotted Pardalote, up to a third of the world's population of the Swift Parrot, thirteen of Tasmania's fourteen endemic bird species, and up to 240,000 breeding pairs of the Short-tailed Shearwater (or Tasmanian Muttonbird).

The Cape Bruny Lighthouse (1838) is an iconic Australian lighthouse and has been the oldest continuous lighthouse in operation. Now out of service, it is part of the South Bruny National Park.

There are extensive bush and coastal walking tracks on the island which make the island a popular nature based destination for visitors.



'Olive May' - Kermadie Hotel and Marina

Huon Valley

The Huon River is an iconic natural feature of the Huon Valley, with its beginnings in the heart of the South West National Park/World Heritage Wilderness Area. Being joined by the Picton River near the Tahune Forest, the river meanders through the Huon Valley, to the commercial hub of Huonville before making its way through the historic boating township of Franklin and beyond. It eventually flows into the D'Entrecasteaux Channel. The Franklin community has a strong link with the Huon River through its maritime and forestry heritage, utilising the river and foreshore for sports and recreation as well as community events.

Far South

Where the mountains and forest meet the Great Southern Ocean... Flanked to the west by the rugged world of the South West National Park, the Far South also has many sheltered, quiet bays and beaches along its eastern flank, around which most settlement occurs. This blend of bush and bay offers visitors many opportunities to be out in nature. Walk a deserted beach, fish for your dinner, go boating, catch a wave or simply enjoy the stillness and beauty of the surrounding forest or summit peaks.

The township of Dover is situated in the Port Esperance Bay, its beautiful beaches attracting visitors seeking a quiet, relaxing holiday experience as well as those seeking a bit of fun on the water and some excellent fishing. It is the gateway township to the South West National Park.



Treeferns

Walking Tracks

1 Alonnah Sheepwash Track

Alonnah, North Bruny Island. Time: 1 hr return

This foreshore walk starts above the Pontoon area at Alonnah, following the old rock-walled carriageway between two previous jetty sites and passing remnants of occupation since the early 1850s.

2 Alum Cliffs Track

Tyndall Beach – Taronga Road, Kingston.

Time: 2 hr return

The newly upgraded southern section of the track climbs from Kingston Beach through coastal blue gum forest with tall silver banksias. It then winds up through silver peppermint bushland, dips into a glorious fern-filled gully, before rising again onto headlands for commanding views over Storm Bay and the Derwent Estuary. Do not approach cliff edges. Closely supervise children.

3 Billy Brown's Falls

Judd's Creek Road, Judbury-Ranelagh region.

Time: 1.5 hrs return. Moderate

The Falls and Bushwalk are approximately 12km up Judds Creek Road in Judbury, accessible by 4WD only. The bushwalk starts at the side of Judds Creek Road, and is signposted. Walk through beautiful fern gullies and tall eucalypt trees to the Falls. Look out for one very large, tall tree.

4 Cape Queen Elizabeth

Close to The Neck, North Bruny Island.

Time: 3 hrs return. Moderate

Highlights include spectacular coastal views, heath lands, beaches and wildlife.

5 East Cloudy Head

Cloudy Bay, South Bruny Island.

Time: 4 hrs return

Access is from the end of Cloudy Bay Road. For the first 3km, walk along the beach, and then along a disused 4WD track. Parts of the walk are not well marked.

6 Fishers Point

Southwest National Park.

Time: 1.5hrs return. Easy

On this fascinating walk discover whalebones, rock pools and the remains of the old pilot station and lighthouse. Please do not remove any items you may find as they are protected by law.

7 Fluted Cape

South Bruny Island National Park.

Time: 3hrs return. Moderate.



8 Grass Point

Adventure Bay, South Bruny Island.

Time: 1 hour return

A flat track, suitable for all ages. The track starts at the end of Adventure Bay Road. The walk begins along the beach and then follows the coastline to Grass Point. Amazing views of Adventure Bay and Cape Queen Elizabeth. Continues to Fluted Cape.

9 Hartz Mountains

Hartz Mountains National Park.

The Hartz Peak Walk is 3 to 5 hrs return Waratah Lookout. Time: 5 mins return. Easy Arve Falls. Time: 20 mins return. Easy Lake Esperance. Time: 2 hrs return. Moderate.



10 Labillardiere Peninsula Walk

South Bruny National Park. Time: 7 hrs circuit. Challenging.



11 Luggaboine Circuit

Jetty Beach, South Bruny Island.

Time: 1.5 hr circuit

Walk commences at the Jetty Beach camping area, located off Lighthouse Road on the way to the Cape Bruny Lighthouse. Walk through coastal heath, eucalypt forest and back along the southern coastline.

Walking Tracks *(cont)*

12 Mavista Nature Walk

Adventure Bay, South Bruny Island.

Time: 20 mins return

Travel south on the main road through Adventure Bay. Turn right at Lockleys Road. Travel for 2.5km then turn right at Resolution Road to Discovery Park Picnic area and the start of the Nature walk.

An easy, short rainforest walk.

13 Mt Mangana

Inland from Adventure Bay, South Bruny Island. Time: 1.5 hrs return

This walk is outside the National Park and commences from Coolangatta Road, 5km inland from Adventure Bay. Mt Mangana is the highest peak on Bruny Island (571m). The track ascends through many varied species of flora and fauna which make up this amazing rainforest.

14 Mt Misery Walk

Huon Bush Retreats, Browns Road, Ranelagh.

Time: 4 hrs return. Moderate

Walk through rainforest and sub-alpine heath lands on a private habitat reserve. Day guests are welcome.

15 Mystery Creek Cave Track

Inland from Ida Bay. Time: 2 hrs return

This track leads into Southwest National Park, to the remains of a limestone quarry and then onto the entrance of the Mystery Creek Cave. If heavy rain has occurred over the past few days, or an unusual amount of rain has fallen, it is recommended that you do not undertake this walk.

16 Nebraska Beach to Bligh Point

Bligh Point, North Bruny Island.

Time: 10 mins to 2 hrs

Starting 2km south of the jetty at the right-of-way sign at Dennes Point. Discover sandstone cliffs naturally weathered into picturesque sculptures.

17 Organ Pipes Walk

Wellington Park, Mt Wellington.

Organ Pipes Walk. Time: 3.5 – 4.5 hrs return.

Moderate

Sphinx Rock. Time: 45 mins return. Moderate

18 Pelverata Falls

Snug Tiers Nature Recreation Area.

Time: 3 hrs return. Moderate

Walk through mainly light forest to these impressive falls – particularly after rain.

19 Slide Track

Inland from Adventure Bay, South Bruny Island. Time: 3.5 hours one way

This 10km track is for the experienced walker. It is better started from Lockleys Road as the track descends steeply to the old abandoned wooden tramway, used to transport logs to Adventure Bay. Be prepared for all types of conditions. Leaflet guide available at local outlets.

20 Snug Falls

Snug Tiers Nature Recreation Area.

Time: 1hr return. Easy

A wonderful walk down to a cool, fern-lined gully at the base of a lovely waterfall.

21 South Cape Bay Walk

Southwest National Park.

Time: 4 hrs return. Moderate

The walk (located within the Southwest National Park) starts from the end of Australia's most southerly road and is the eastern end of the popular seven day South Coast Track to Port Davey.

22 Southport Bluff Beach

Southport. Time: 3 hrs return. Medium

The Ida Bay Railway is the simplest way to reach the beginning of the track to Southport Lagoon and Southport Bluff. The walking track begins from the "train station" at Deep Hole. This walk has some muddy sections.



Walking Tracks *(cont)*

23 Southport Lagoon Walk

*Southport. Time (from Deep Hole):
2 to 3 hours return*

This shallow coastal lagoon is surrounded by a conservation area, protecting most of Tasmania's marsupial species and a variety of bird species, including the rare ground parrot. The walking track begins from the 'train station' at Deep Hole. The Southport Beach Bluff walk is also accessible from the Southport Lagoon Walk taking you down to Southport beach via the Bluff. Round trip via the Lagoon and Bluff 3 to 4 hours return. Simply take the Ida Bay Railway to Deep Hole and walk from there.

24 Tahune Forest Reserve

Arve Road, Geeveston.

Tahune Airwalk. *Time: 40 mins return. Easy*
Swinging Bridges. *Time: 1 hr return. Easy*
Huon Pine Walk. *Time: 20 mins return. Easy*

25 The Port Davey and South Coast Tracks

Southwest National Park.

Time: 6 to 8 days. Difficult

There are no huts along the tracks so walkers must be fully self-sufficient, well-equipped and experienced. Tasmanian Expeditions (03) 6339 3999 can provide guided, fully-inclusive walks from November to March.

26 Truganini Lookout

The Neck, Bruny Island. Time: 15 mins return

A timber stepped boardwalk takes you to some of the most spectacular 360 degree panoramic views.

27 Duckhole Lake

Hastings. Time: 1 hr return. Easy

This is an easy stroll to an idyllic lake. Duckhole Lake is a flooded sinkhole that is part of the surrounding cave and karst landscape.



These walks are part of Tasmania's 60 great short walks – pick up a brochure for more information or visit www.parks.tas.gov.au

Tasmanian Trail

The Tasmanian Trail is a long distance (480km) multi-purpose recreational trail extending from Devonport on the northern coast of Tasmania to Dover in the far south. It is intended for use by walkers, mountain bikers and horse riders.

Through forests and farmlands, across highland plateaus and past the buildings and bridges of some of Australia's oldest towns, the Tasmanian Trail provides a journey rich in cultural and natural heritage.

The route is designed for those who enjoy soft adventure rather than for the hardened wilderness seekers. The experience provided by the Trail is recreational, cultural, historical and nature based.

More information is available from www.tasmaniantrail.com.au

For more walking tracks on the Huon Trail please visit www.huontrail.org.au

Leave No Trace!


Leave no trace is an internationally accepted way of minimising impacts on the places we visit. You can do your bit by following these seven principles:

- plan ahead and prepare
- walk and camp on durable surfaces
- dispose of waste properly
- leave what you find
- minimise campfire impacts
 - use a fuel stove
- respect wildlife
- be considerate of your hosts and other visitors.

Tasmanian Visitor Information Network



Tasmania's nationally accredited Visitor Centres located throughout the State offering personalised service - look for the blue sign with the yellow  all around Tasmania.

Visit www.startwithi.com.au or download our **free** app 



Booking and information centre
Map Ref F3



2273 Huon Highway, Huonville TAS 7109
P (03) 6264 0326 F (03) 6264 0394
huon.vic@huonvalley.tas.gov.au
www.huonvalleyvisitorcentre.com.au



Huon Valley Visitor Centre



Visit the Huon Valley Visitor Centre for all your travel needs. Friendly local staff can assist you with information and offer a free booking service for accommodation and attractions statewide. The Centre offers a comprehensive range of giftware made locally and souvenirs as well as a providore showcasing some of the fine local produce available from the Huon Trail region. The Centre is open 7 days a week excluding Christmas Day and Good Friday. Easy Parking, Wi-Fi, toilets and baby change facilities.



Your mobile guide to Tasmania

Brochure Buddy

Brochure Buddy is a division
of Tourism Brochure Exchange 



Mobile access to brochures
has never been easier.

Download the
free App now!



Photography:
Tourism Tasmania & Garry Moore